

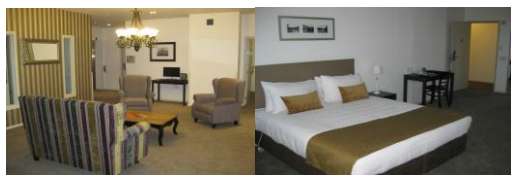


Quest Hamilton Grand Opening 2012!



Quest Serviced Apartments, 51 London Street, Hamilton

Will be operational by 12th March 2012 and comprise four levels, consisting of 38 freehold investment apartments, with retail shops on the ground level. This historical 1920's **Heritage Building**, will now be part of Hamilton's business community and be a fully managed boutique apartment, tenanted by Leeda Lifestyle Ltd, a franchisee of Quest Serviced Apartments.



The official opening of Quest Hamilton was on held on Saturday 25th February and her Worship the Mayor of Hamilton cut the ribbon after giving her official opening speech. The Mayor thanked Safari Group for their vision and diligence in bring this historic building back to her former glory. Many guests travelled from Auckland to attend this event, amongst them were: Stephen Mansfield (CEO of Quest), Scott Beagley (Davis Langdon), Linda Fox (CCF Legal) just to name a few.

Ms Gail Henry of the Historical Places Trust said that she was very happy with the Auckland Development Company and the exceptional results they had achieved.

For further reading on the opening day, please refer to the Waikato Times Article online at: <http://www.stuff.co.nz/waikato-times/news/6479728/Historic-dairy-building-takes-on-yet-another-new-identity>

From the Investment side of the development, there are only 7 units left to sell. Our main purchasers are French & Singaporean offshore investors, and a large portion of our sales have been via Domaines, our French agent and Brooke International, our Singapore agent. Domaines are going back to French Polynesia during March and Brookes are keen for their next exhibition in Singapore.

QUEST, TUAM STREET, Christchurch

Quest Tuam Street, has currently been put on hold awaiting the restructuring of Christchurch City Centre and the outcome of the **New Plan for Christchurch CBD**.



"New Release"

Quest Beaumont St Mary's Bay, Auckland



Quest Beaumont, 80 Beaumont Street, St Mary's Bay, Auckland

This 34 Unit, 5 level building, is Safari Group's newest development project. Estimated start date on site is late March 2012.

Tender documents and plans have been prepared. Sub trades have submitted their tender prices. The designs are all underway with consents being processed. This 5 level complex and independently operated ground floor café is "Quests" newest venture and will clearly form part of the growth and development of the city

Summary Specifications:

Retail Space	65m ²
Full Floor Area:	1,547m ²
Site Area	423m ²

GENERAL FACTS ON YOUR INVESTMENT:

At Quest Beaumont

- Term: 30 year Lease
- A lessee with a proven track record throughout Australasia for the last 20 years
- Up to 7.3% gross return
- Gross return paid directly into your bank account on a monthly basis
- A 2% annual rental increase after year 3

Demand offshore is high, so **be quick to purchase your next investment**, as 10 units have been snapped up already with our French agent and they will be travelling abroad again soon. There is also a proposed exhibition in Singapore, scheduled for May 2012



Ramada Resort and Spa Lakeside Rotorua

Safari Group's future five star development opportunity is also underway on the edge of Lake Rotorua, comprising 68 separately keyed luxury units, an on-site Restaurant & Conference Centre and luxury Spa. Rotorua is one of New Zealand's premier central North Island destinations. Lake Rotorua is renowned for Maori cultural, tourism, geothermal areas etc. We expect to release this property to the market by the end of March 2012 and commence construction work on site later this year once consents are in place.



Any questions? Please call your Agent or log on to our website www.propertyinvest.net.nz